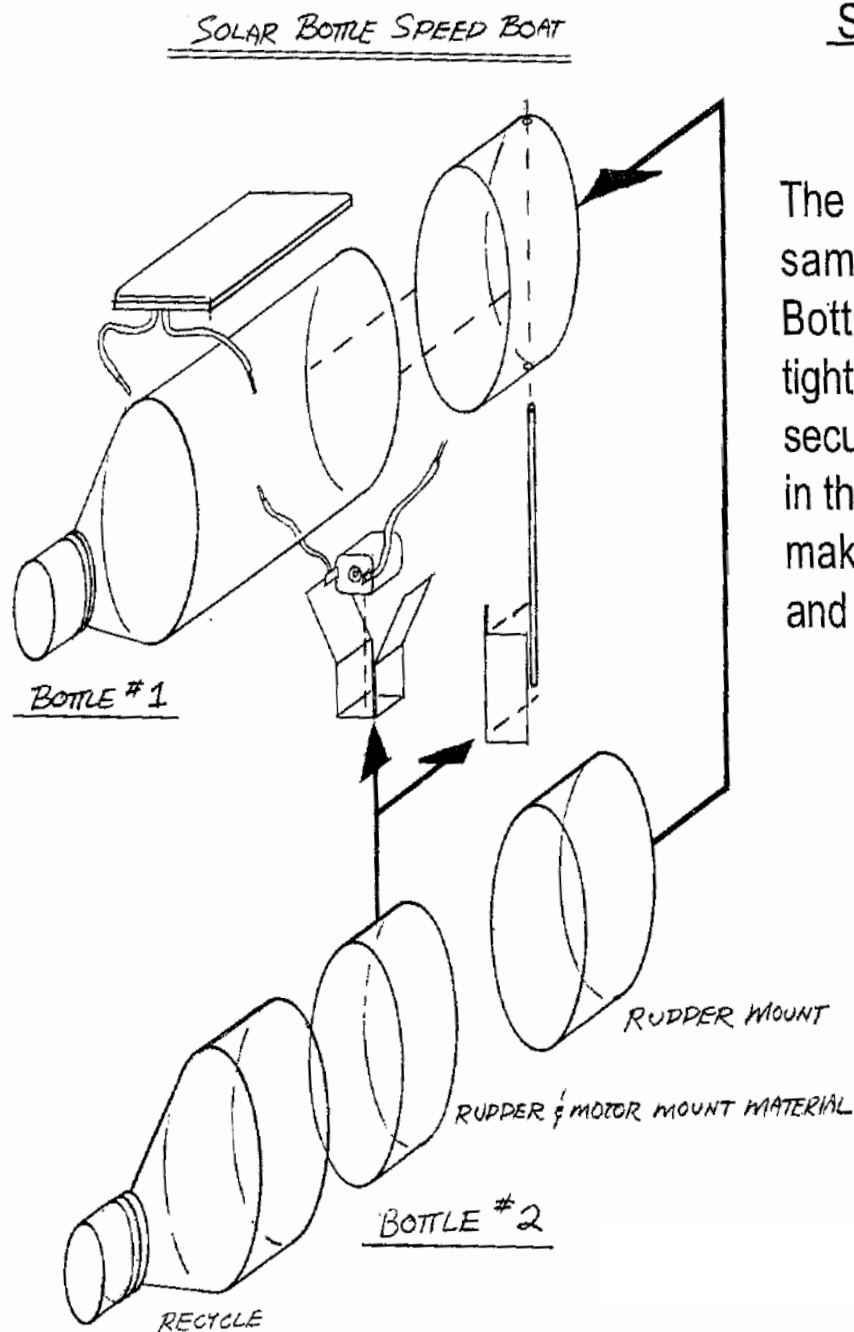


Speed Boat Assembly: Figure 1



SPEED BOAT ASSEMBLY

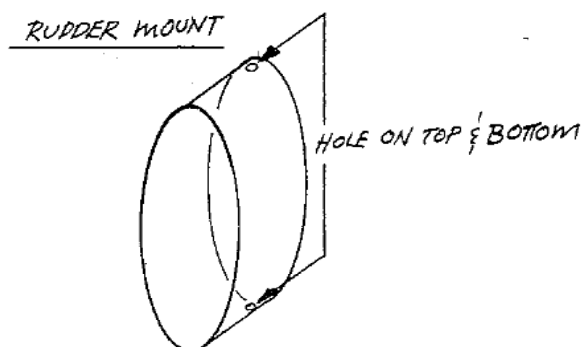
The speed boat requires 2 of the same size and shape bottles. Bottle #1 needs to be kept air tight. Keep the cap on and fasten securely. There are to be no holes in this bottle. Bottle #2 is used to make the rudder, rudder mount and the motor mount.

Material List: 2 same size & shape bottles

1. Bottle #1 needs to be kept air tight. Keep the cap on and fasten securely. There are NO holes in this bottle
2. Bottle #2 is used to make the rudder, rudder mount and the motor mount.

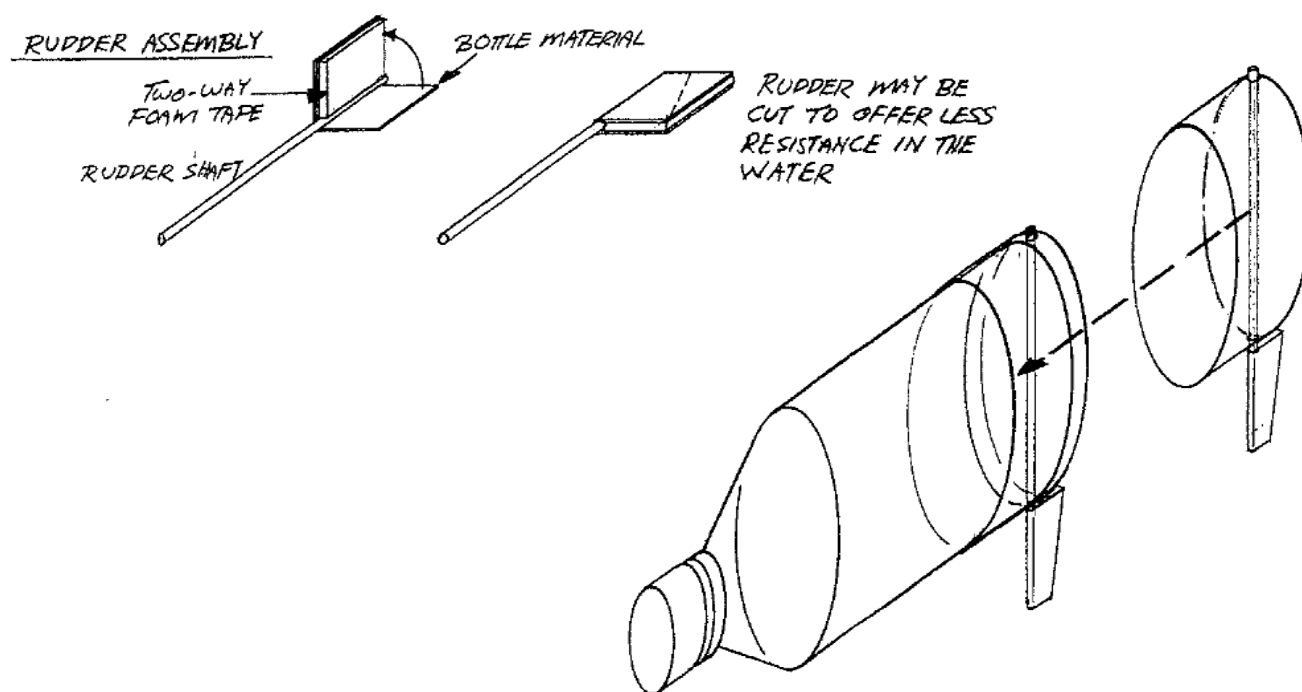
Rudder Mount: Refer to diagram below: **Figure 2**

SPEED BOAT RUDDER MOUNT ASSEMBLY



SPEED BOAT ASSEMBLY

Place the completed rudder assembly into the rudder mount's 2 punched holes and slide the completed unit onto bottle #1.



1. Cut the bottom portion of Bottle #2 off. Make sure it is long enough to fit over the end of Bottle #1.
2. Punch 2 holes into this portion of the bottle. Keep these holes centered and as close to the bottom of the bottle as possible.

Rudder: Figure 2

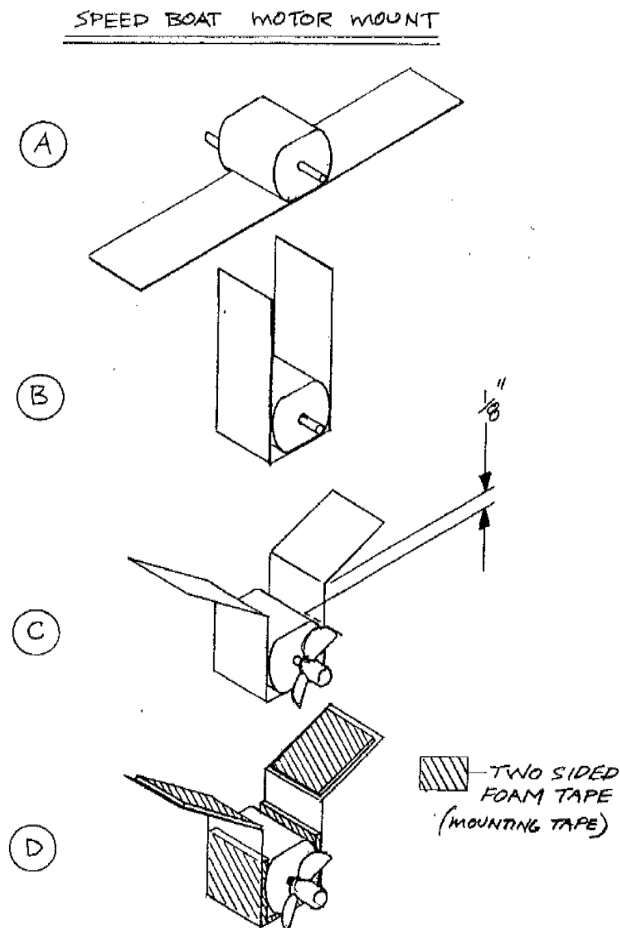
1. Cut a piece of plastic approximately 2" x 2" square from Bottle #2.
2. Fold this piece in half and place a piece of mounting tape onto one side.
3. Make sure that it is placed close to the fold line, but not on the fold line because you will need room for the shaft.
4. Insert the rubber shaft keeping it flush to the bottom of the rudder.

Rudder/Rudder Mount Installation: Figure 2

1. Place the completed rudder assembly into the rudder mount's 2 punched holes.
2. Slide the completed unit onto Bottle #1.

Motor Mount: Figure 3

1. Cut a strip of plastic approximately 5" x 1" from Bottle #2.
2. Place the motor on the center of this strip. (Figure A)
3. Bend and slightly fold the sides up and around the motor. (Figure B)
4. Place the propeller onto the motor shaft to determine the clearance from the top of the propeller to the bottom of Bottle #1.
5. Bend and slightly fold the plastic on both sides of the mount. You don't want the prop to hit the bottom of Bottle #1. (Figure C)
6. Cut the mounting tape, peel and place around the 3 sides of the motor.
7. Cut the mounting tape and place on the 2 surfaces of the mount. These 2 surfaces will attach to Bottle #1. (Figure D)



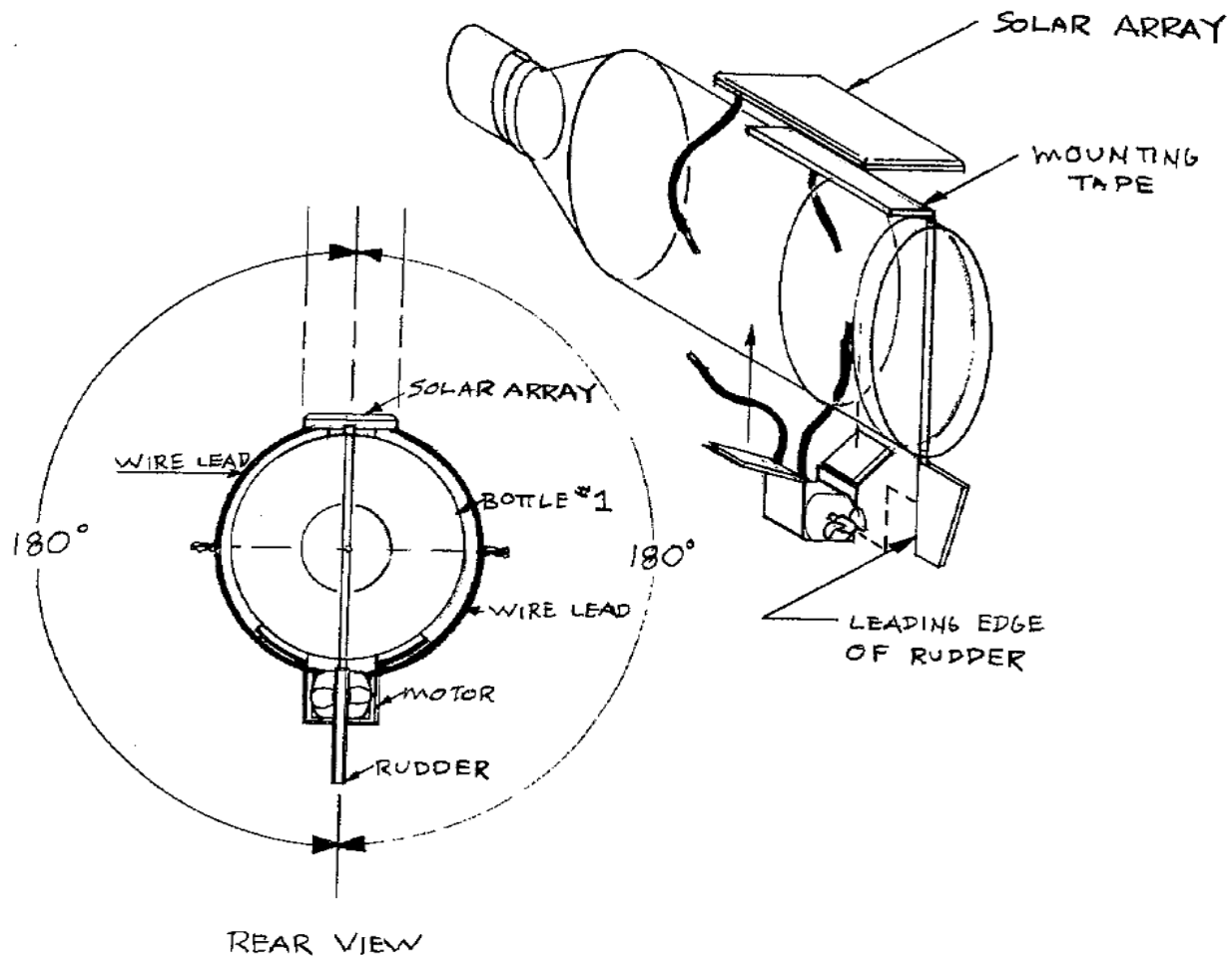
Speed Boat Assembly: Final Assembly:

1. See Figure 4 for an illustration of installation.
2. Take the completed motor mount assembly and place onto the bottom of Bottle #1 making sure to line up the center of the prop to the leading edge of the rudder as illustrated in rear view.
3. After proper alignment of the motor and rudder, the solar array can be mounted.
4. Using the mounting tape, place a strip along the underside of the solar array and carefully center it on the top of Bottle #1 as shown.
5. Use the 1 gray wire nut to connect the blue wire from the solar array to the red wire of the motor.
6. Next, use the 1 gray wire nut to connect the red wire of the solar array to the blue wire of the motor.

7. Tape these wire leads to the side of Bottle #1.
8. The speed boat is now ready for the water!

Figure 4

SPEED BOAT FINAL ASSEMBLY



Reference: www.SolarMade.com

Copyright ©2003, Solar World: Drawings and much of the directions from Solar World. Directions and material list modified slightly for use in the classroom.